

# AIP SUPPLEMENT BRUNEI DARUSSALAM

**AIRAC**

TEL : 673-2331730  
AFS : WBSBYNYX  
FAX : 673-2331706  
673-2331730  
E-mail: [ais.brunei@civil-aviation.gov.bn](mailto:ais.brunei@civil-aviation.gov.bn)  
Website: [www.civil-aviation.gov.bn](http://www.civil-aviation.gov.bn)

AERONAUTICAL INFORMATION SERVICE  
DEPARTMENT OF CIVIL AVIATION  
MINISTRY OF TRANSPORT AND  
INFOCOMMUNICATIONS  
BRUNEI INTERNATIONAL AIRPORT, BB2513

01/20  
13<sup>th</sup> Feb

## AMENDED WAYPOINT ANDUKI , BRUNEI DARUSSALAM

### 1. INTRODUCTION

- 1.1 This AIP Supplement introduces changes to ATS waypoint structure in Anduki, Brunei Darussalam.
- 1.2 The primary purpose for the amendment is to enable the safe and efficient flow of traffic around Anduki on the SID Rwy 05.

### 2. WAYPOINT AMENDMENT

- 2.1 Delete waypoint  
RUSIL : 04400065N 114252623E
- 2.2 Insert waypoint  
ADBEP : 04400065N 114252623E

### 3. IMPLEMENTATION

- 3.1 This AIP Supplement and the relevant charts will become effective 26 March 2020 at 0000UTC.
- 3.2 A Trigger NOTAM will be issued notifying the effective date of the implementation.

### 4. CANCELLATION

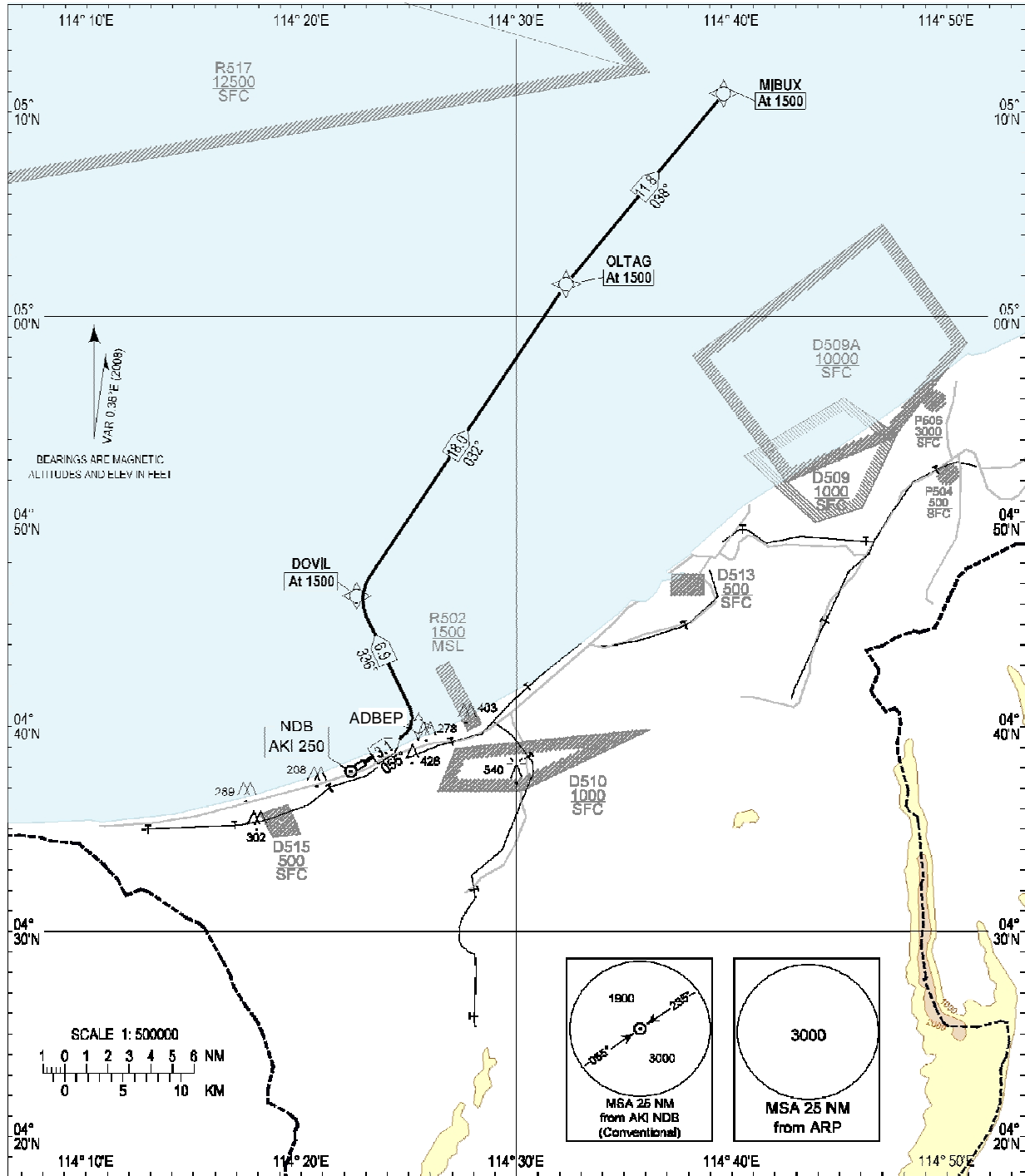
- 4.1 This AIP Supplement will remain current until the information is incorporated in AIP Brunei Darussalam.

**STANDARD DEPARTURE CHART  
INSTRUMENT (SID)**

**TRANSITION ALTITUDE  
11000ft**

**TWR 122.10**

**ANDUKI  
RNAV (GNSS)  
RWY 05**



**Routing**  
DER05 - RUSIL[A1500,L] - DOVIL[A1500,R] - OLTAG[A1500,R] - MIBUX[A1500]

- Notes**
1. Close-in obstacles exist for RWY 05 departures.
  2. For obstacle clearance, climb at 5.0% (minimum) to 1500' AMSL.
  3. Critical nav aids: Nil.
  4. All waypoints are fly-by.
  5. All positions are referenced to WGS84 datum.

**DEPARTURE END RWY 05**  
AK05D 043814.49N 1142254.46E

**WAYPOINTS**

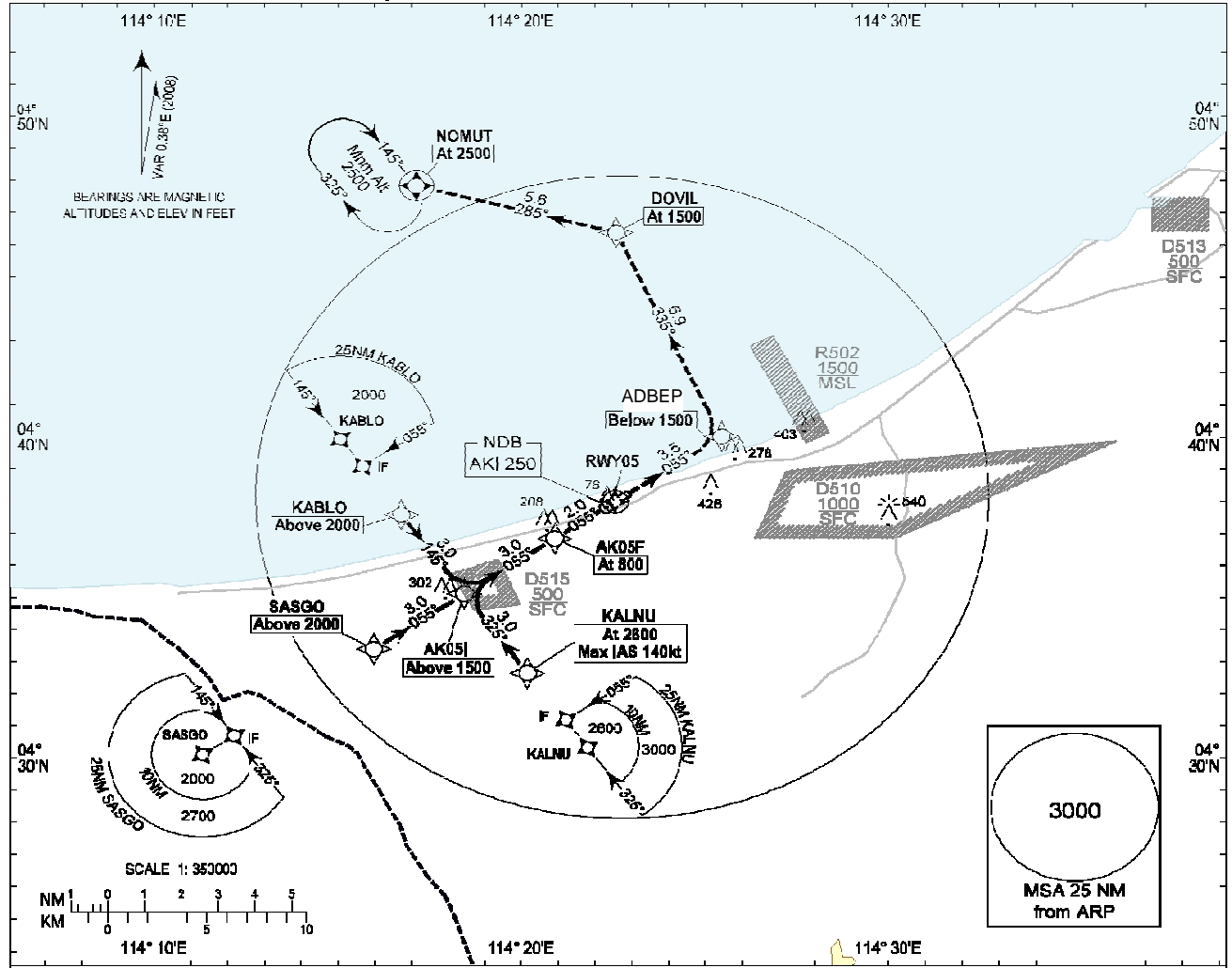
ADBEP	044000.65N	1142526.23E
DOVIL	044621.92N	1142234.52E
OLTAG	050135.26N	1143218.83E
MIBUX	051053.70N	1143938.41E

**INSTRUMENT  
APPROACH  
CHART - ICAO**

**AERODROME ELEV 9ft**  
**HEIGHTS RELATED TO  
 THR RWY 05 - ELEV 9ft**  
**MIN TEMP 20°C**

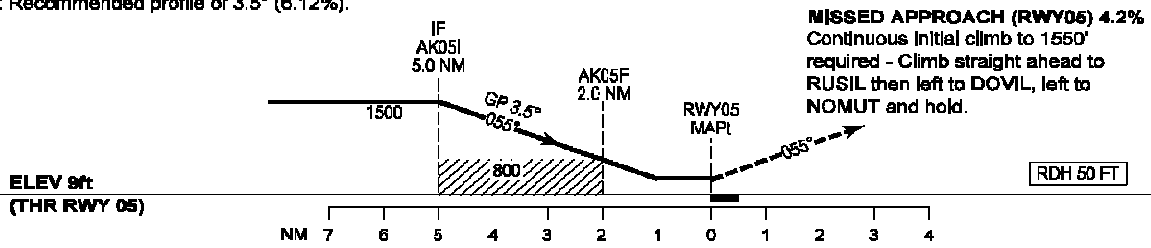
**TWR 122.10**

**ANDUKI  
 RNAV (GNSS)  
 (CAT H) RWY 05**



**Transition Altitude: 11000ft**

Note: Recommended profile of 3.5° (6.12%).



**ELEV 9ft  
 (THR RWY 05)**

**RDH 50 FT**

**MISSED APPROACH (RWY05) 4.2%**  
 Continuous initial climb to 1550' required - Climb straight ahead to RUSIL then left to DOVIL, left to NOMUT and hold.

OCA(H)								
Category of Aircraft	H	NM TO THR						
		7	6	5	4	3	2	1
LNAV/VNAV	380 (361)							
LNAV	410 (401)	2680 (2651)	2290 (2281)	1920 (1911)	1550 (1541)	1170 (1161)	800 (791)	430 (421)