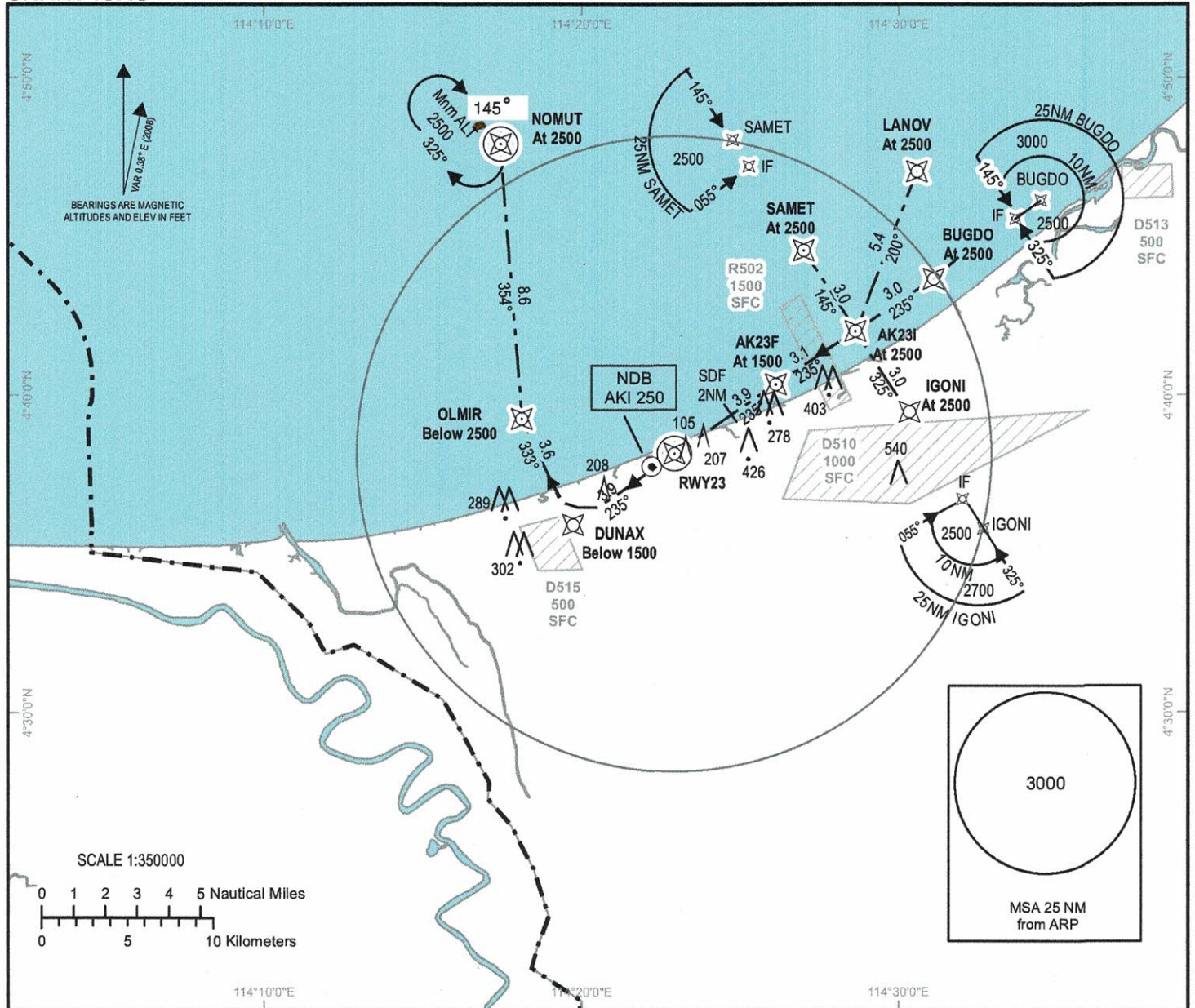


**INSTRUMENT
APPROACH
CHART-ICAO**

AERODROME ELEV 9ft
HEIGHTS RELATED TO
THR 23-ELEV 9ft
MIN TEMP 20° C

TWR 122.10

ANDUKI
RNAV (GNSS)
(CAT H) RWY 23

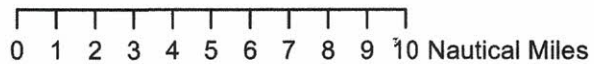
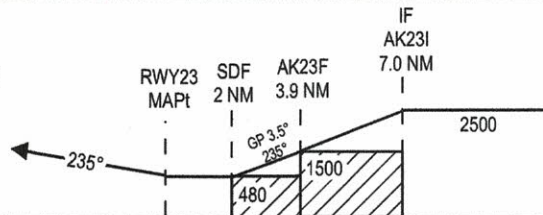


Transition Altitude: 11000ft

Note: Recommended profile of 3.5° (6.12%)

MISSED APPROACH (RWY 23) 4.2%
Climb straight ahead to below 1500' at DUNAX then right below 2500' at OLMIR, then climbing to 2500' to NOMUT and hold.

RDH 50 FT



		OCA(H)						
Category of Aircraft	H	NM TO THR						
LNAV/VNAV	328(319)	7	6	5	4	3	2	1
LNAV	460(451)	2660 (2651)	2290 (2281)	1920 (1911)	1550 (1541)	1170 (1161)	800 (791)	430 (421)