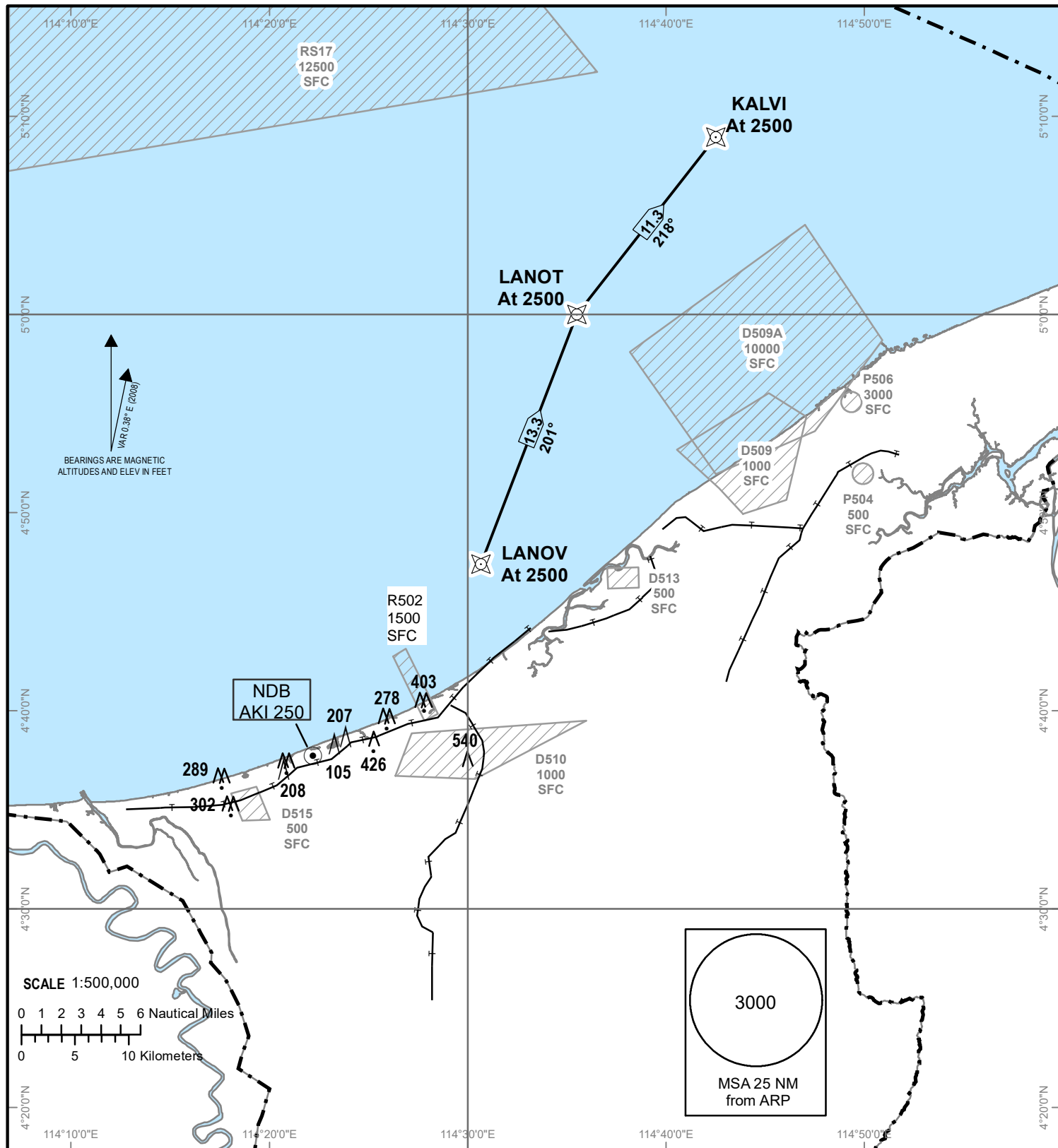


**STANDARD ARRIVAL CHART
INSTRUMENT (STAR)**

TRANSITION ALTITUDE
11000ft

TWR 122.10

ANDUKI
RNAV (GNSS)
RWY 23



Notes

1. Critical nav aids: Nil.
2. All waypoints are fly-by.
3. All positions are referenced to WGS84 datum.

WAYPOINTS

KALVI	050842.90N	1144223.66E
LANOT	045947.16N	1143521.91E
LANOV	044719.23N	1143034.62E