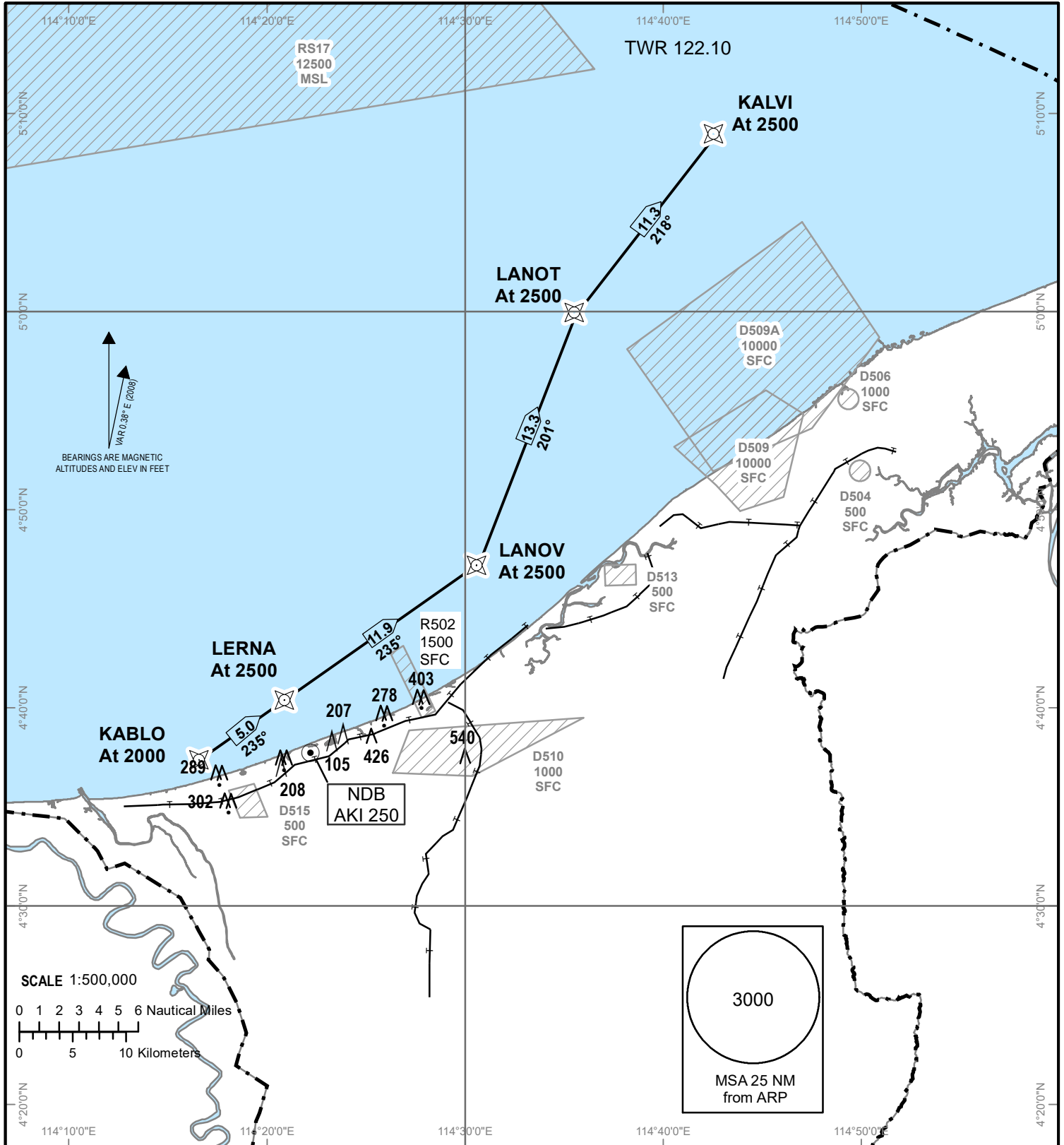


**STANDARD ARRIVAL CHART
INSTRUMENT (STAR)**

TRANSITION ALTITUDE
11000ft

TWR 122.10

ANDUKI
RNAV (GNSS)
RWY 05



Notes

1. Critical nav aids: Nil.
2. All waypoints are fly-by.
3. All positions are referenced to WGS84 datum.

WAYPOINTS

KALVI	050842.90N	1144223.66E
LANOT	045947.16N	1143521.91E
LANOV	044719.23N	1143034.62E
LERNA	044027.37N	1142049.40E
KALBO	043734.14N	1141643.38E