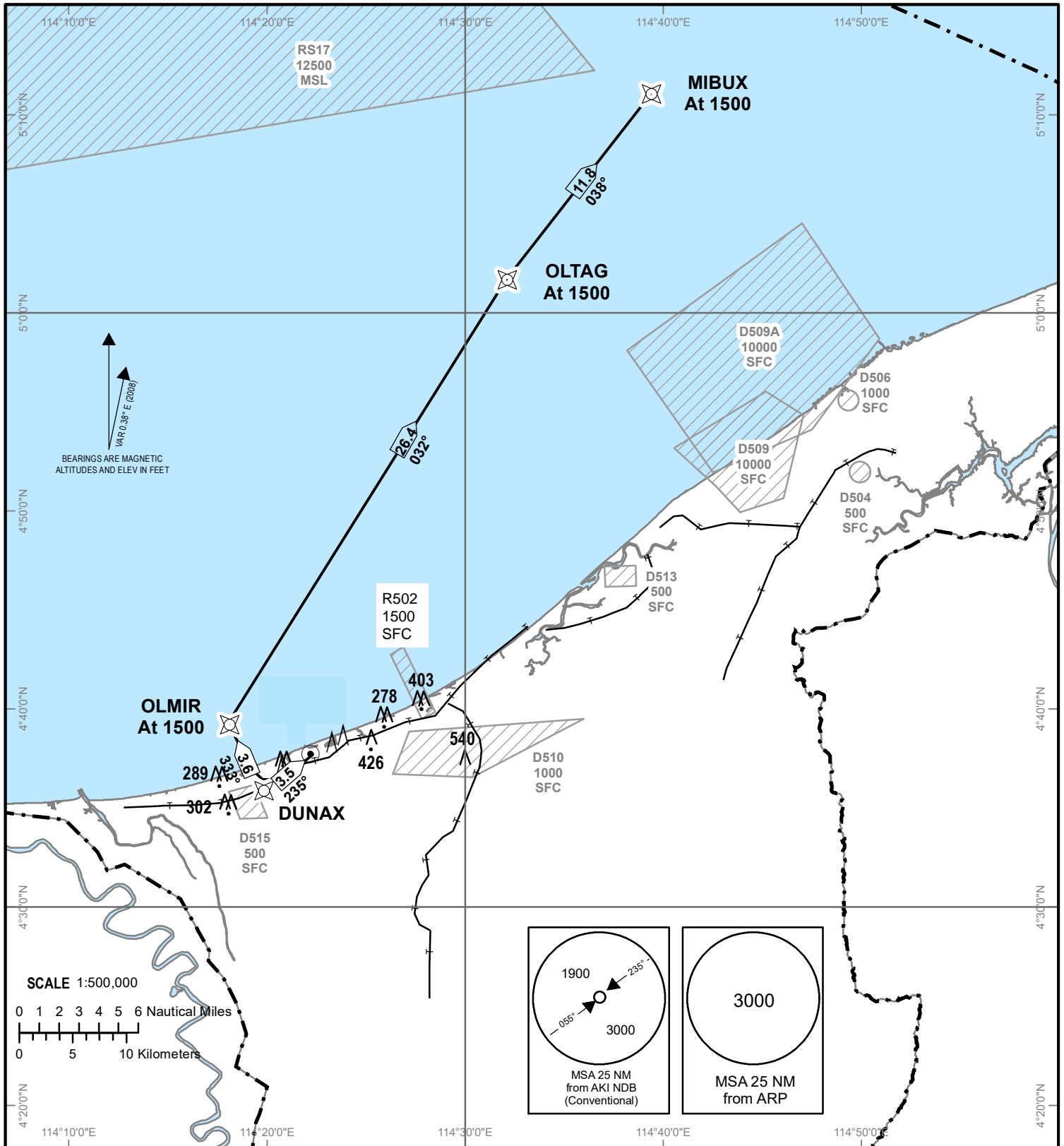


**STANDARD DEPARTURE CHART  
INSTRUMENT (SID)**

TRANSITION ALTITUDE  
11000ft

TWR 122.10

ANDUKI  
RNAV (GNSS)  
RWY 23



**ROUTING**  
DER23-DUNAX[A1500,-R]-OLMIR[A1500,R]-OLTAG[A1500,R]-MIBUX[A1500]

- Notes**
1. Close-in obstacles exist for RWY 23 departures.
  2. For obstacle clearance, climb at 5.0% (minimum) to 1500' AMSL.
  3. Critical nav aids: Nil.
  4. All waypoints are fly-by.
  5. All positions are referenced to WGS84 datum.

DEPARTURE END RWY 23	
AK23D	043759.40N 1142232.88E
WAYPOINTS	
DUNAX	043558.71N 1141940.37E
OLMIR	043914.40N 1141801.19E
OLTAG	050135.26N 1143218.83E
MIBUX	051053.70N 1143938.41E