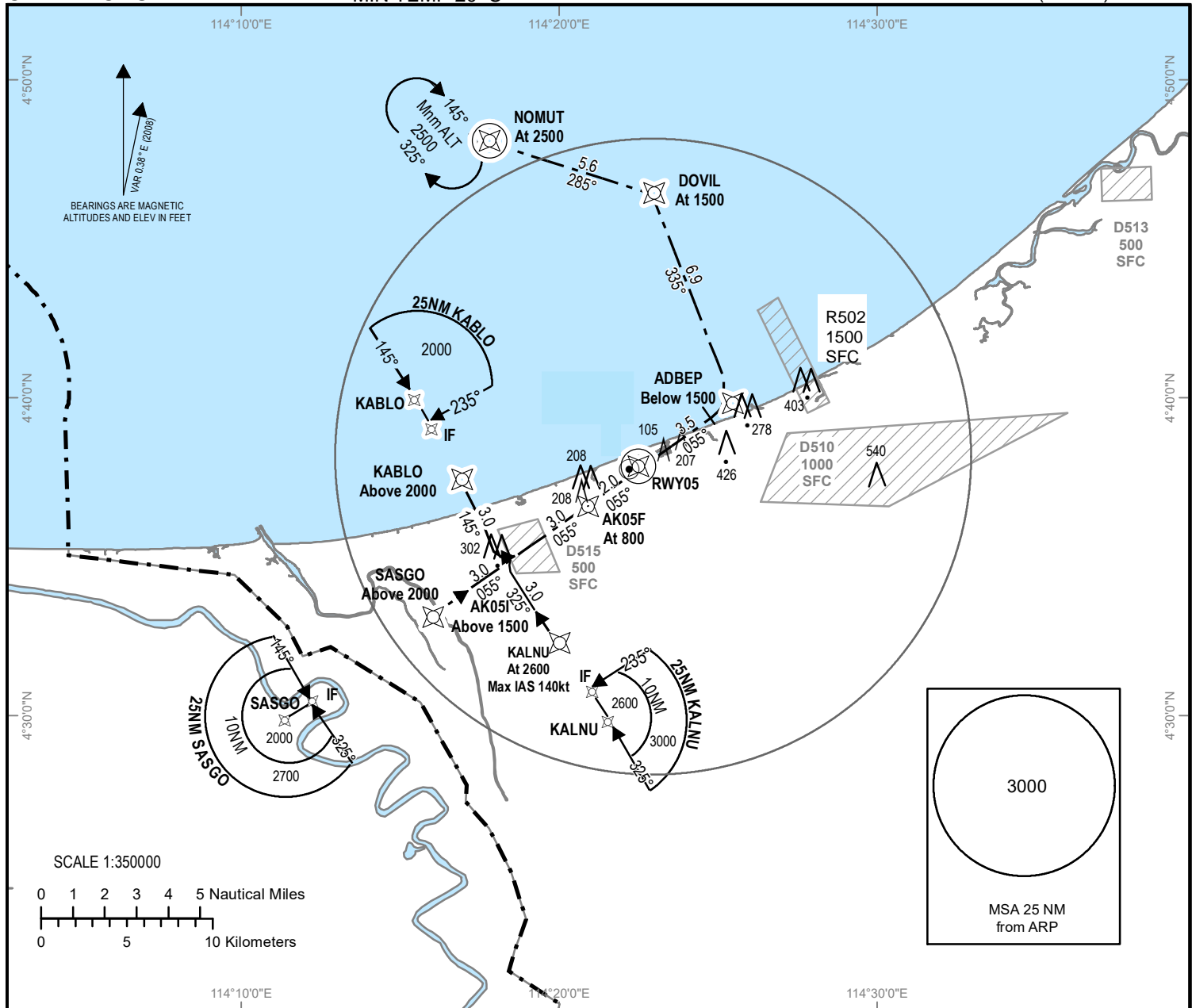


**INSTRUMENT
APPROACH
CHART-ICAO**

AERODROME ELEV 9ft
HEIGHTS RELATED TO
THR 05-ELEV 9ft
MIN TEMP 20°C

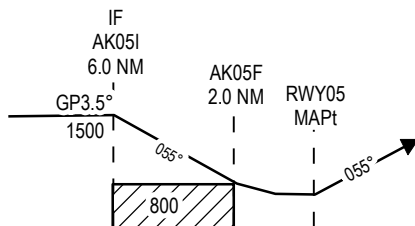
TWR 122.10

ANDUKI
RNAV (GNSS)
(CAT H) RWY 05



Transition Altitude: 11000ft

Note: Recommended profile of 3.5° (6.12%)



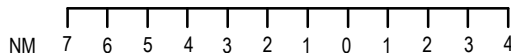
MISSED APPROACH (RWY 05) 4.2%

Climb straight ahead to be below 1500' at ADBEP then left to be 1500' at DOVIL then left climbing to 2500' to NOMUT and hold.

RDH 50 FT

ELEV 9ft

(THR RWY 05)



OCA(H)								
Category of Aircraft	H	NM TO THR						
		7	6	5	4	3	2	1
LNAV/VNAV	263 (254)	7	6	5	4	3	2	1
LNAV	460 (451)	2660 (2651)	2290 (2281)	1920 (1911)	1550 (1541)	1170 (1161)	800 (791)	430 (421)