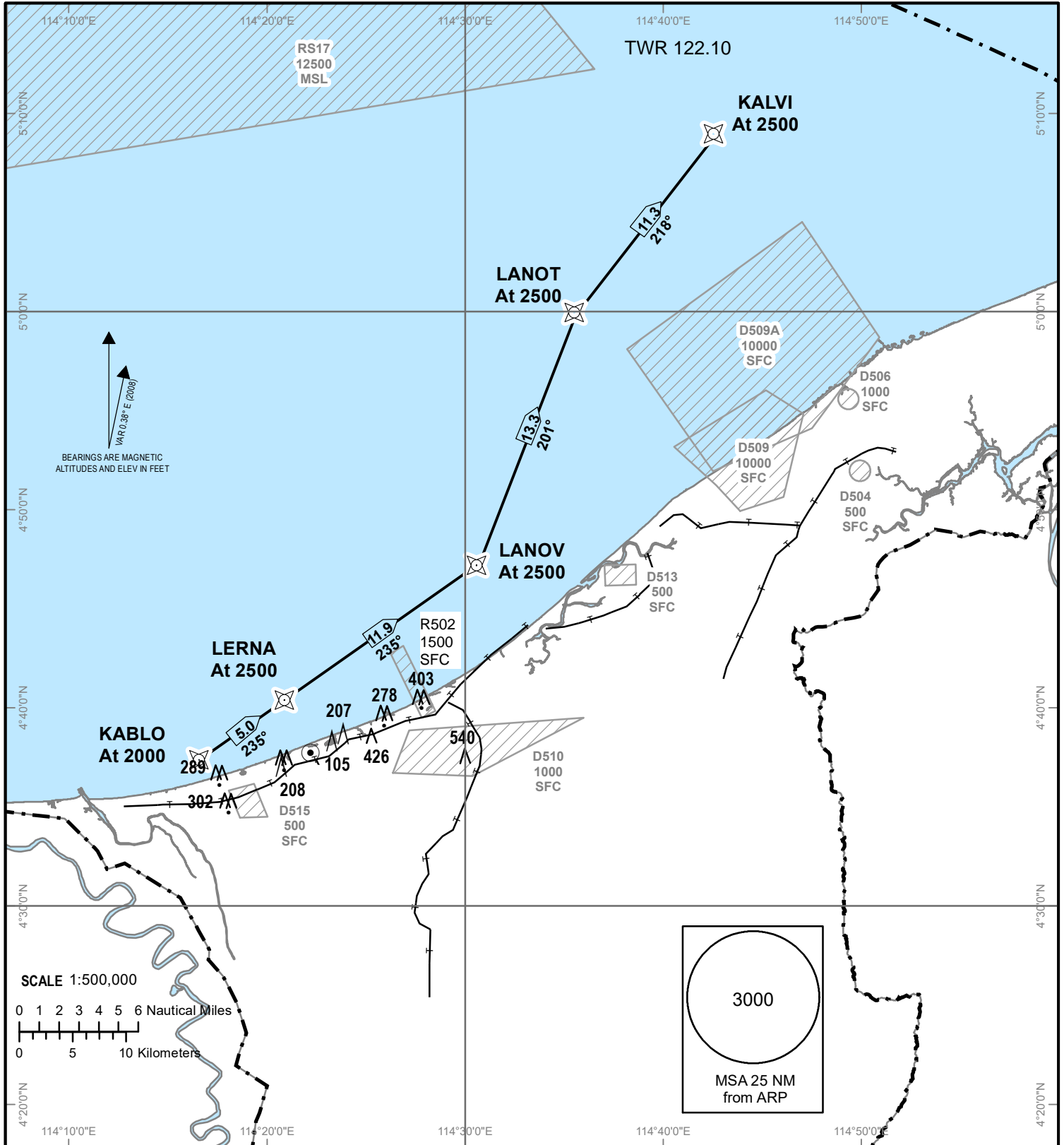


**STANDARD ARRIVAL CHART  
INSTRUMENT (STAR)**

TRANSITION ALTITUDE  
11000ft

TWR 122.10

ANDUKI  
RNAV (GNSS)  
RWY 05



- Notes
1. Critical nav aids: Nil.
  2. All waypoints are fly-by.
  3. All positions are referenced to WGS84 datum.

WAYPOINTS		
KALVI	050842.90N	1144223.66E
LANOT	045947.16N	1143521.91E
LANOV	044719.23N	1143034.62E
LERNA	044027.37N	1142049.40E
KALBO	043734.14N	1141643.38E