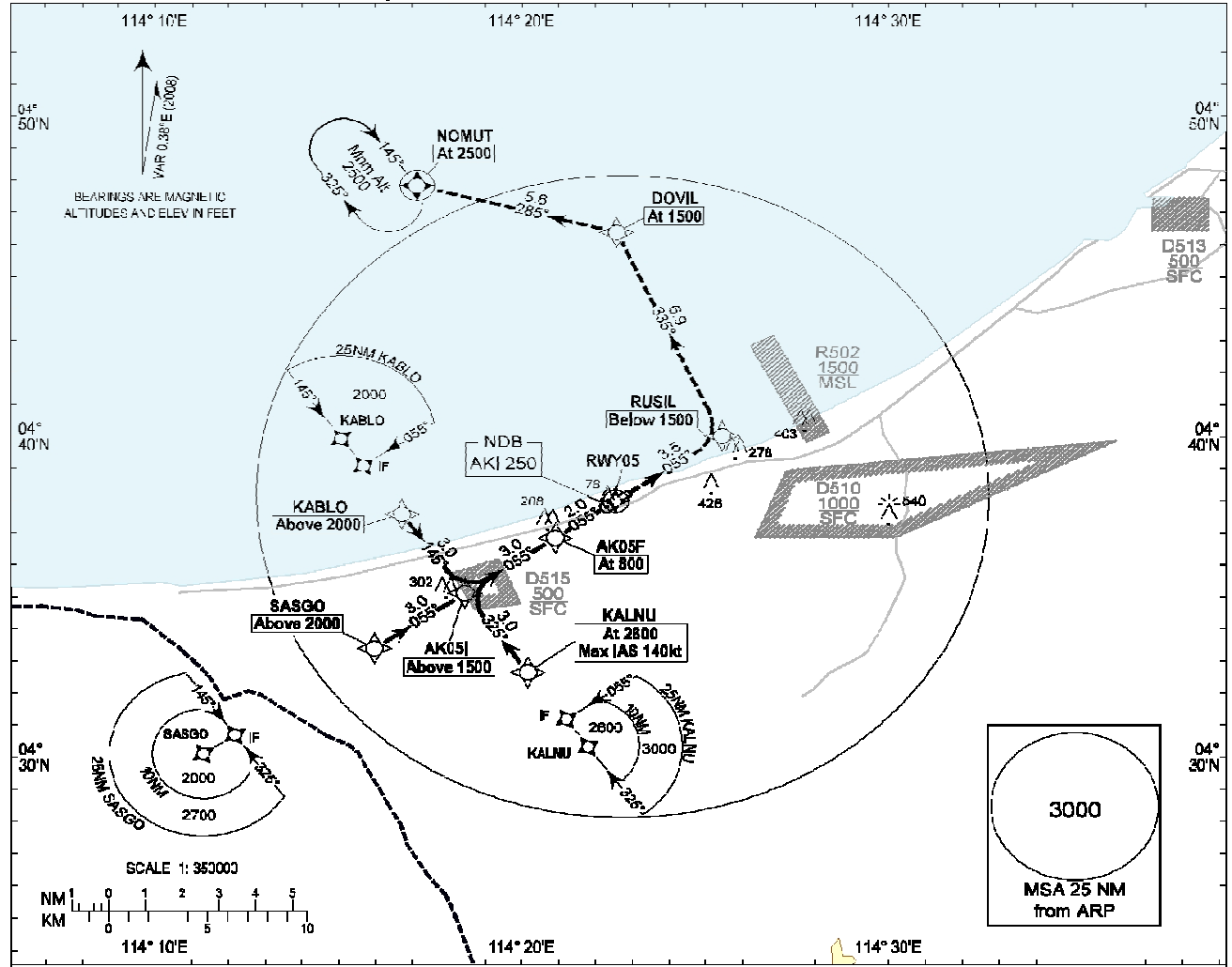


**INSTRUMENT
APPROACH
CHART - ICAO**

AERODROME ELEV 9ft
HEIGHTS RELATED TO
THR RWY 05 - ELEV 9ft
MIN TEMP 20°C

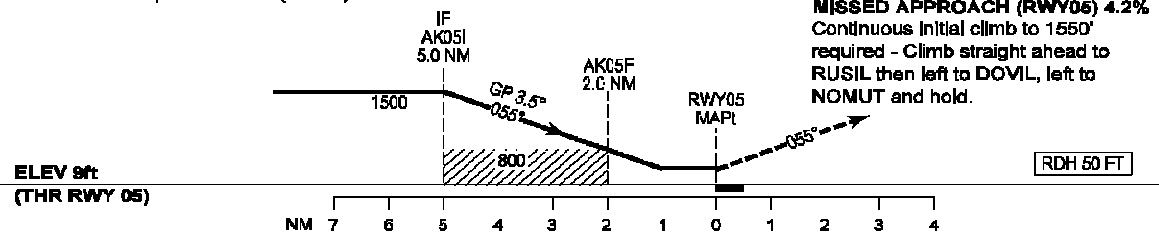
TWR 122.10

**ANDUKI
RNAV (GNSS)
(CAT H) RWY 05**



Transition Altitude: 11000ft

Note: Recommended profile of 3.5° (6.12%).



MISSED APPROACH (RWY05) 4.2%
Continuous initial climb to 1550' required - Climb straight ahead to RUSIL then left to DOVIL, left to NOMUT and hold.

ELEV 9ft
(THR RWY 05)

RDH 50 FT

OCA(H)								
Category of Aircraft	H	NM TO THR						
		7	6	5	4	3	2	1
LNAV/VNAV	380 (381)							
LNAV	410 (401)	2680 (2651)	2290 (2281)	1920 (1911)	1550 (1541)	1170 (1161)	800 (791)	430 (421)