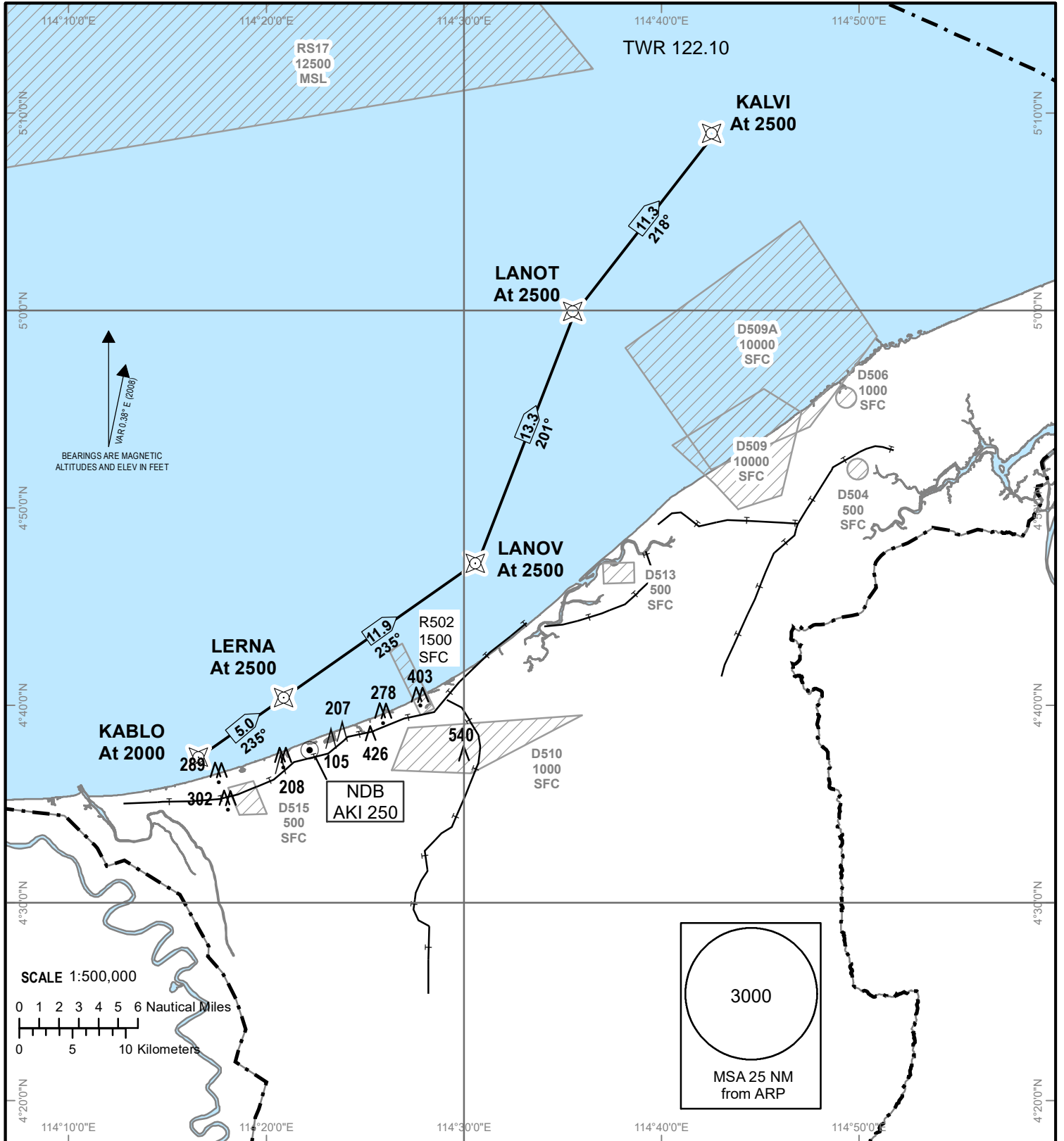


**STANDART ARRIVAL CHART
INSTRUMENT (STAR)**

TRANSITION ALTITUDE
11000ft

TWR 122.10

ANDUKI
RNAV (GNSS)
RWY 05



- Notes
1. Critical nav aids: Nil.
 2. All waypoints are fly-by.
 3. All positions are referenced to WGS84 datum.

| WAYPOINTS | | |
|-----------|------------|-------------|
| KALVI | 050842.90N | 1144223.66E |
| LANOT | 045947.16N | 1143521.91E |
| LANOV | 044719.23N | 1143034.62E |
| LERNA | 044027.37N | 1142049.40E |
| KALBO | 043734.14N | 1141643.38E |