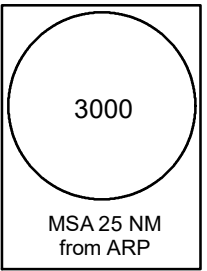
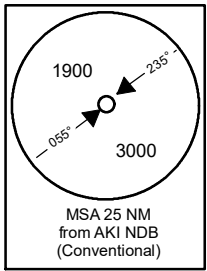
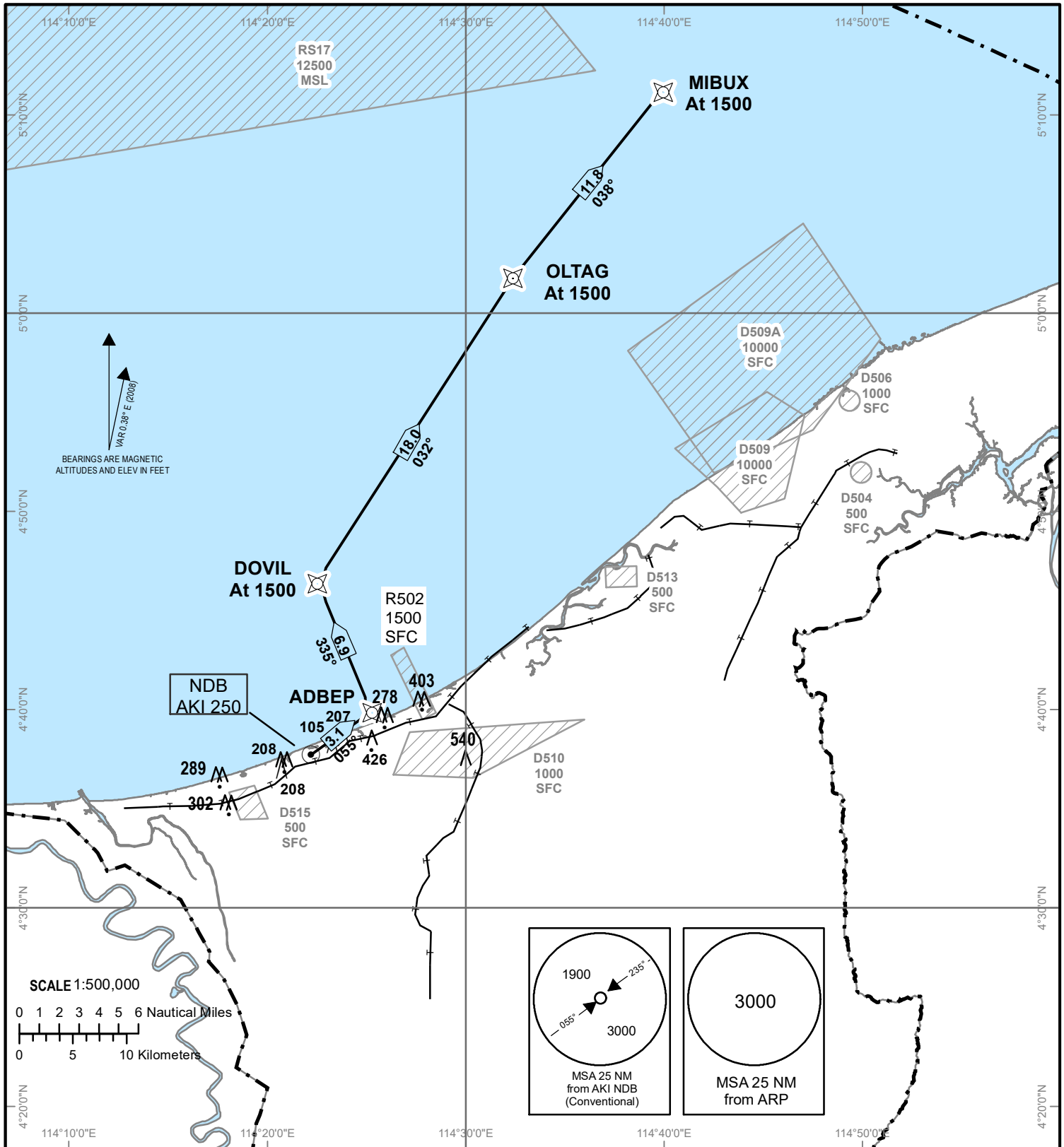


STANDARD DEPARTURE CHART INSTRUMENT (SID)

TRANSITION ALTITUDE
11000ft

TWR 122.10

ANDUKI
RNAV (GNSS)
RWY 05



Routing
DER23-ADBEP[A1500-,R]-DOVIL[A1500,R]-OLTAG[A1500,R]-MIBUX[A1500]

- Notes**
1. Close-in obstacles exist for RWY 23 departures.
 2. For obstacle clearance, climb at 5.0% (minimum) to 1500' AMSL.
 3. Critical nav aids: Nil.
 4. All waypoints are fly-by.
 5. All positions are referenced to WGS84 datum.

DEPARTURE END RWY 05	
AK05D	043814.49N 1142254.46E
WAYPOINTS	
ADBEP	044000.65N 1142526.23E
DOVIL	44621.92N 1142234.52E
OLTAG	050135.26N 1143218.83E
MIBUX	051053.70N 1143938.41E