

NEGARA BRUNEI DARUSSALAM

AIRAC AIP SUPPLEMENT

TEL: 673-2331730
AFS: WBSBYNYX
FAX: 673-2331706
673-2331730
E-mail: ais.brunei@dca.gov.bn
Website: www.dca.gov.bn

AERONAUTICAL INFORMATION SERVICE
DEPARTMENT OF CIVIL AVIATION
MINISTRY OF TRANSPORT AND
INFOCOMMUNICATION
BRUNEI INTERNATIONAL AIRPORT, BB2513

16/20
19th November

CHANGES AND ADDITIONAL RNAV GNSS CHART - ANDUKI AERODROME -

1. INTRODUCTION

- 1.1 The purpose of this AIP Supplement is to inform aircraft operation and pilots on the amendment to Instrument Charts of Anduki aerodrome.

2. DETAILS OF THE CHANGES AND ADDITIONAL TO THE CHART

- 2.1 See Attachment overleaf for details of the changes and additional in the charts.
- 2.2 The list of relative aeronautical information is:

WBAK AD 2-10
WBAK AD 2-11
WBAK AD 2-12
WBAK AD 2-13
WBAK AD 2-14
WBAK AD 2-15

3. IMPLEMENTATION

- 3.1 This AIP Supplement will become effective on 31st December 2020.

4. CANCELLATION

- 4.1 This AIP Supplement will remain current until the information is published in AIP Brunei.

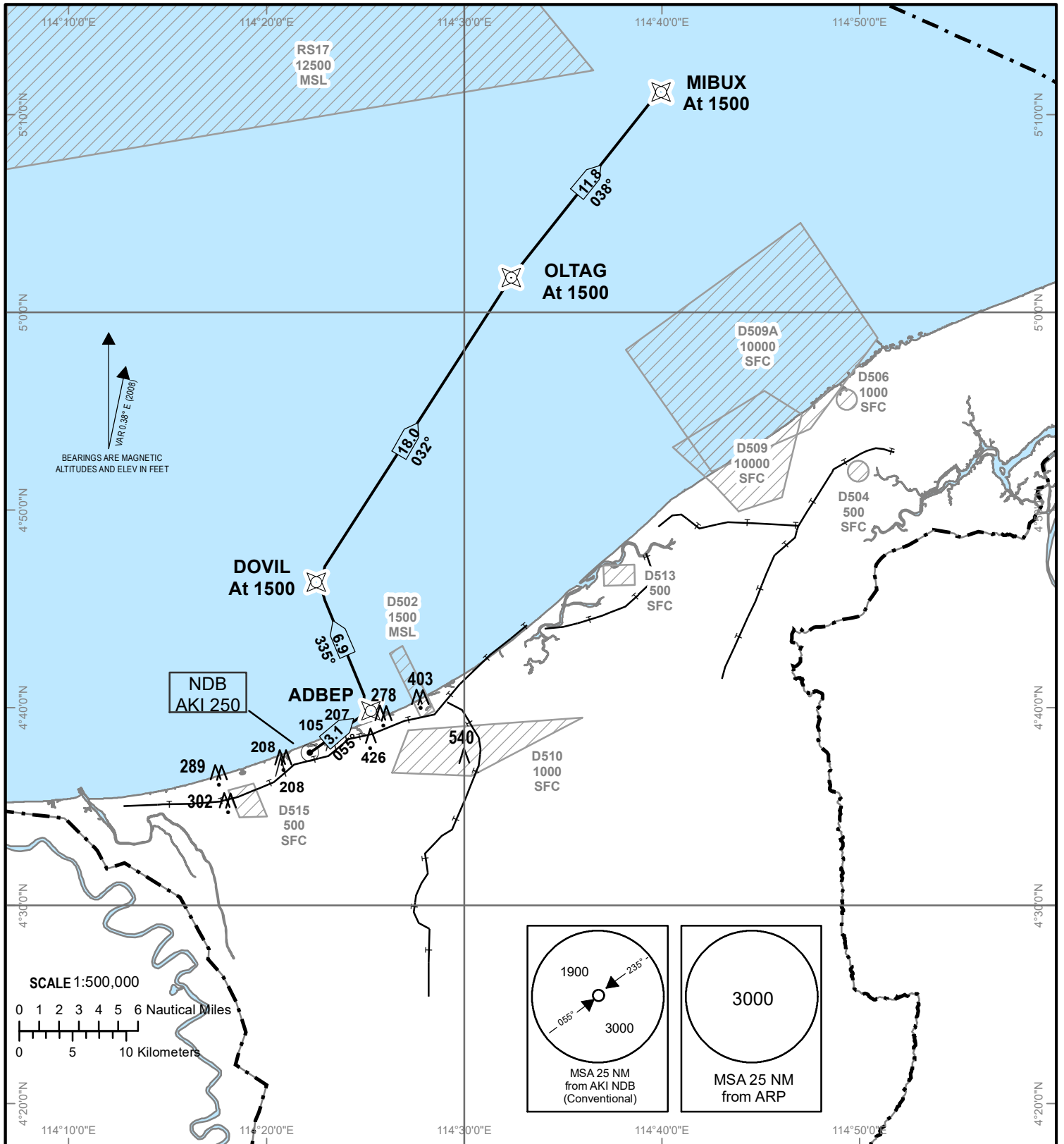
HAJI AMINUDDIN HJ MOHD TAIB
Director of Civil Aviation
Department of Civil Aviation
Brunei Darussalam

STANDARD DEPARTURE CHART INSTRUMENT (SID)

TRANSITION ALTITUDE
11000ft

TWR 122.10

ANDUKI
RNAV (GNSS)
RWY 05



Routeinn
DER05-ADBEP[A1500-,R]-OLMIR[A1500,R]-OLTAG[A1500,R]-MIBUX[A1500]

Notes

1. Close-in obstacles exist for RWY 05 departures.
2. For obstacle clearance, climb at 5.0% (minimum) to 1500' AMSL.
3. Critical nav aids: Nil.
4. All waypoints are fly-by.
5. All positions are referenced to WGS84 datum.

DEPARTURE END RWY 05
AK05D 043814.49N 1142254.46E

WAYPOINTS

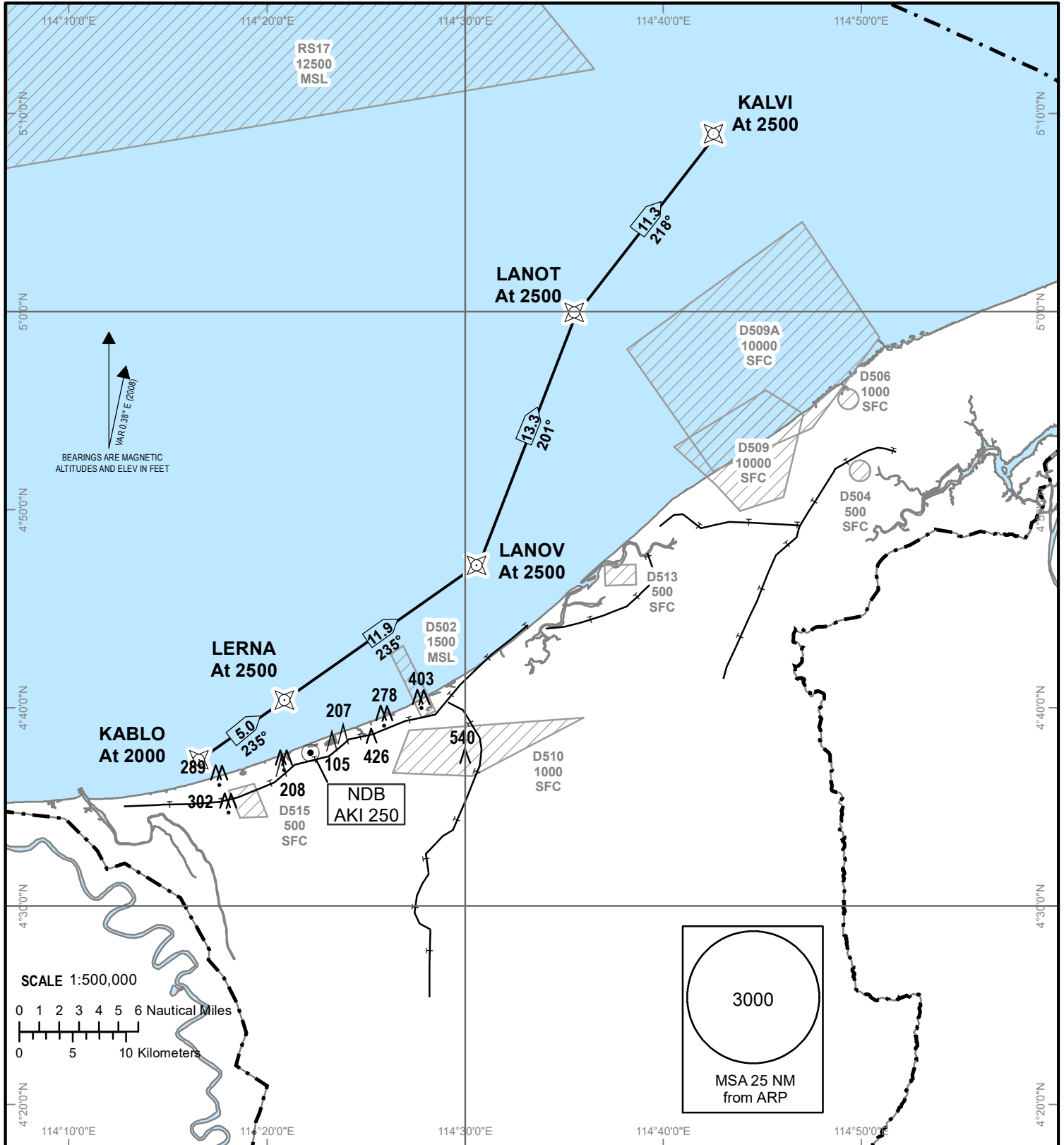
ADBEP	044000.65N	1142526.23E
DOVIL	44621.92N	1142234.52E
OLTAG	050135.26N	1143218.83E
MIBUX	051053.70N	1143938.41E

STANDARD ARRIVAL CHART INSTRUMENT (STAR)

TRANSITION ALTITUDE
11000ft

TWR 122.10

ANDUKI
RNAV (GNSS)
RWY 05



Notes

1. Critical nav aids: Nil.
2. All waypoints are fly-by.
3. All positions are referenced to WGS84 datum.

WAYPOINTS

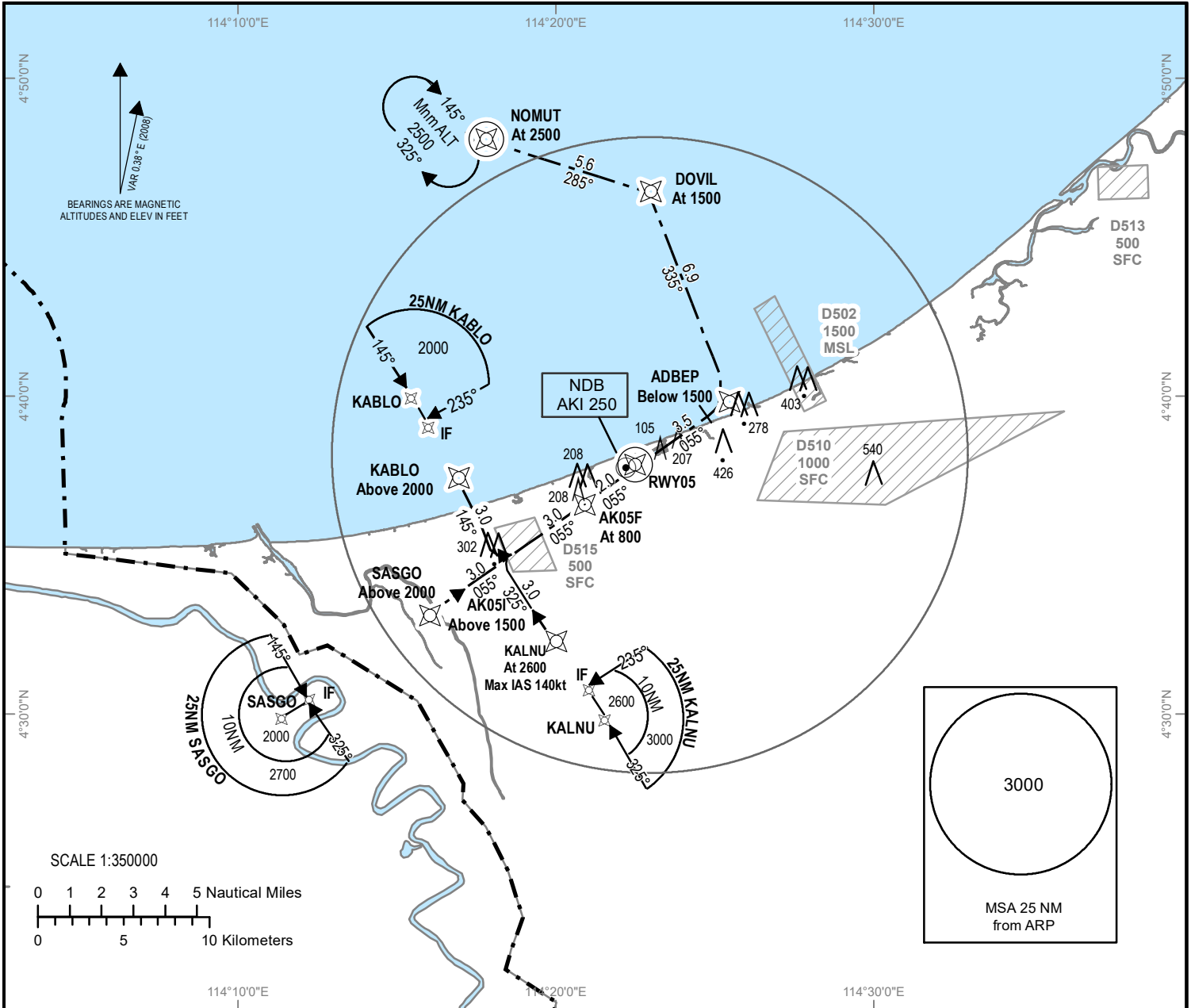
KALVI	050842.90N	1144223.66E
LANOT	045947.16N	1143521.91E
LANOV	044719.23N	1143034.62E
LERNA	044027.37N	1142049.40E
KALBO	043734.14N	1141643.38E

INSTRUMENT APPROACH CHART - ICAO

AERODROME ELEV 9ft
 HEIGHTS RELATED TO
 THR RWY 05- ELEV 9ft
 MIN TEMP 20°C

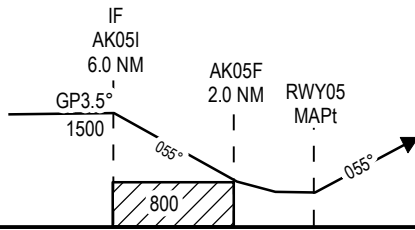
TWR 122.10

ANDUKI
 RNAV (GNSS)
 (CAT H) RWY 05



Transition Altitude: 11000ft

Note: Recommended profile of 3.5° (6.12%)



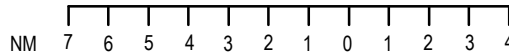
MISSED APPROACH (RWY 05) 4.2%

Climb straight ahead to be below 1500' at ADBEP then left to be 1500' at DOVIL then left climbing to 2500' to NOMUT and hold.

RDH 50 FT

ELEV 9ft

(THR RWY 05)



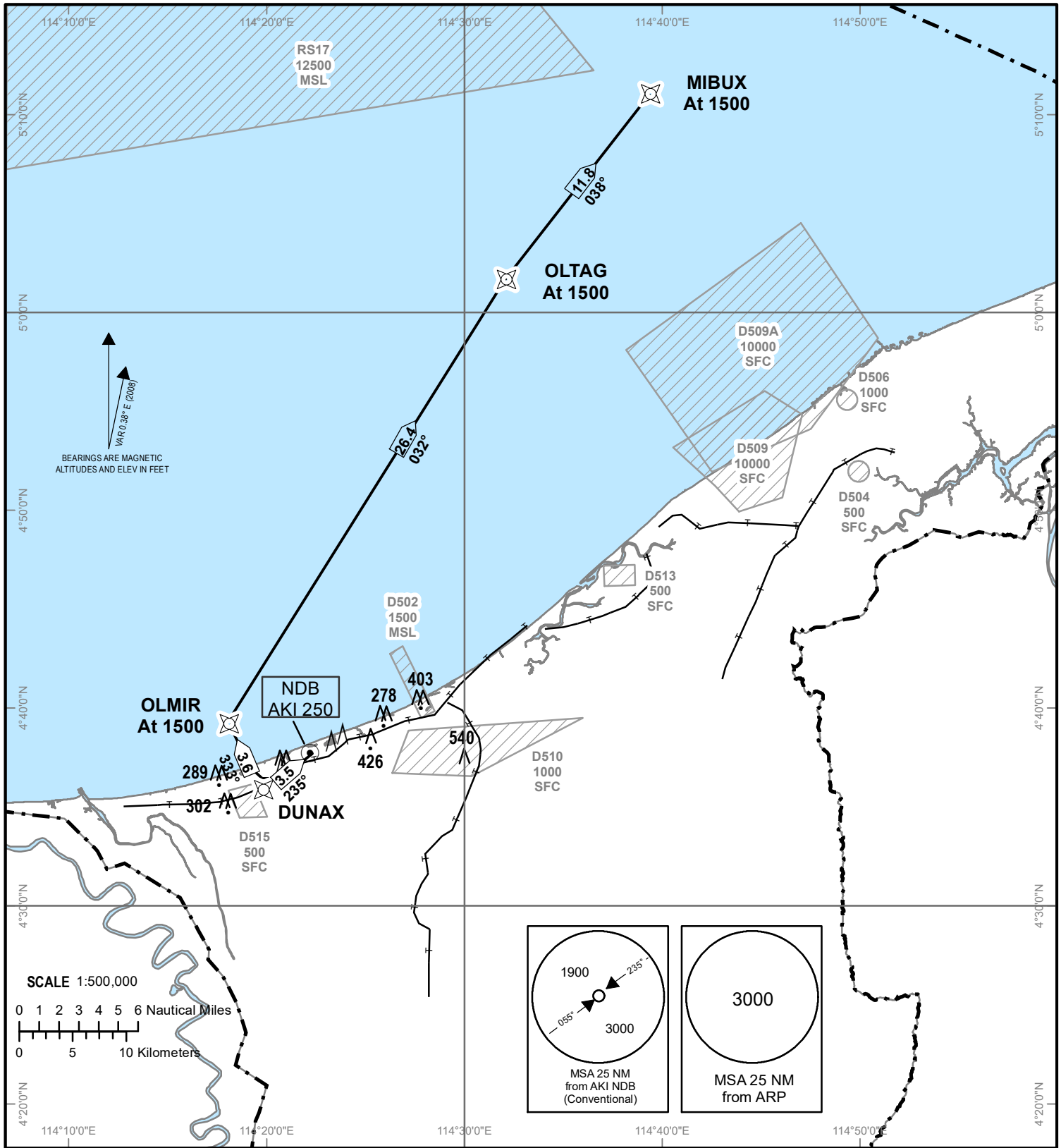
OCA(H)								
Category of Aircraft	H	NM TO THR						
		7	6	5	4	3	2	1
LNAV/VNAV	263 (254)	7	6	5	4	3	2	1
LNAV	460(451)	2660 (2651)	2290 (2281)	1920 (1911)	1550 (1541)	1170 (1161)	800 (791)	430 (421)

STANDARD DEPARTURE CHART INSTRUMENT (SID)

TRANSITION ALTITUDE
11000ft

TWR 122.10

ANDUKI
RNAV (GNSS)
RWY 23



Routing
DER23-DUNAX[A1500-,R]-OLMIR[A1500,R]-OLTAG[A1500,R]-MIBUX[A1500]

- Notes
1. Close-in obstacles exist for RWY 23 departures.
 2. For obstacle clearance, climb at 5.0% (minimum) to 1500' AMSL.
 3. Critical nav aids: Nil.
 4. All waypoints are fly-by.
 5. All positions are referred to WGS84 datum.

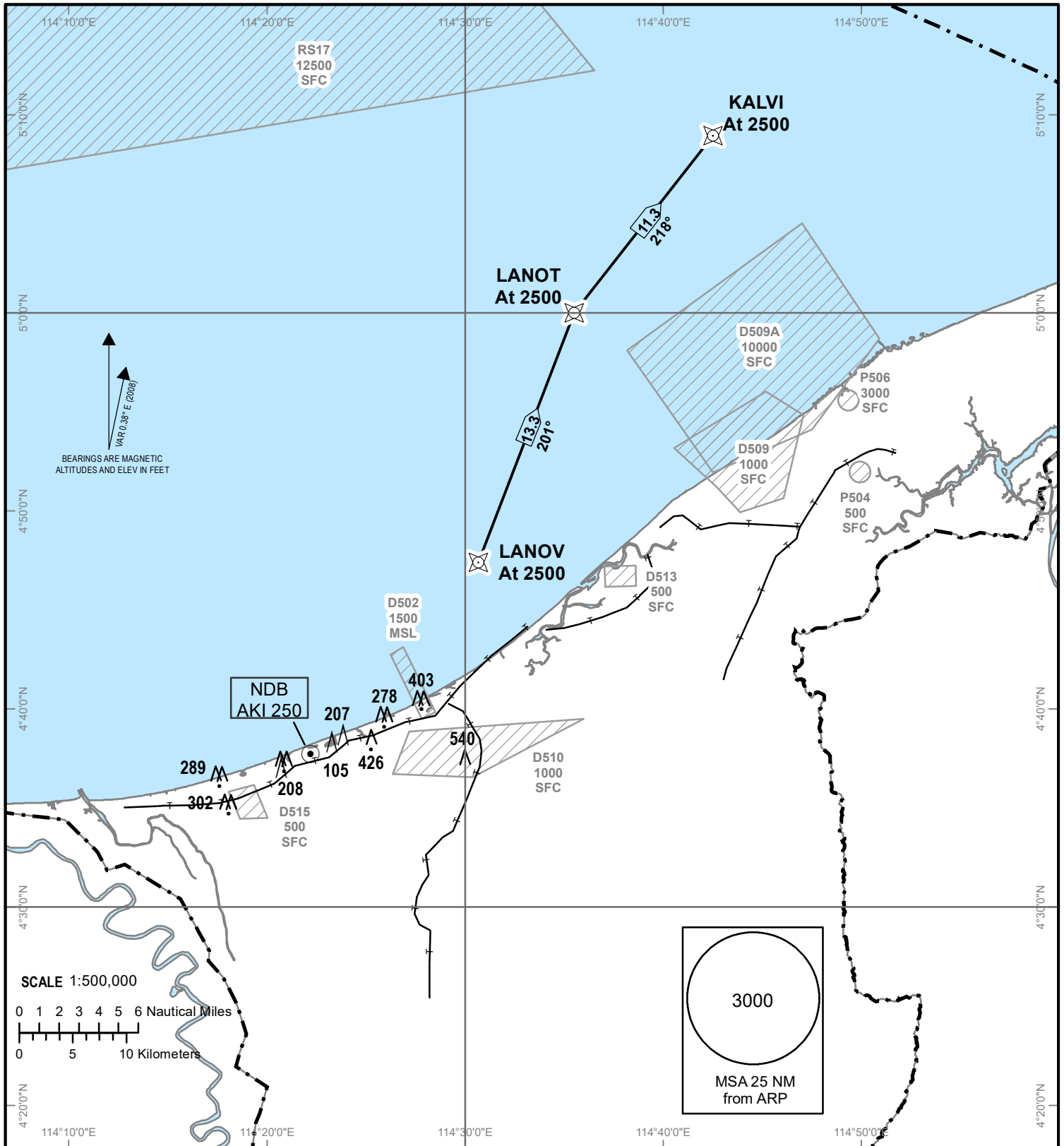
DEPARTURE END RWY 23	
AK23D	043759.40N 1142232.88E
WAYPOINTS	
DUNAX	043558.71N 1141940.37E
OLMIR	043914.40N 1141801.19E
OLTAG	050135.26N 1143218.83E
MIBUX	051053.70N 1143938.41E

STANDARD ARRIVAL CHART INSTRUMENT (STAR)

TRANSITION ALTITUDE
11000ft

TWR 122.10

ANDUKI
RNAV (GNSS)
RWY 23



Notes

1. Critical nav aids: Nil.
2. All waypoints are fly-by.
3. All positions are referenced to WGS84 datum.

WAYPOINTS

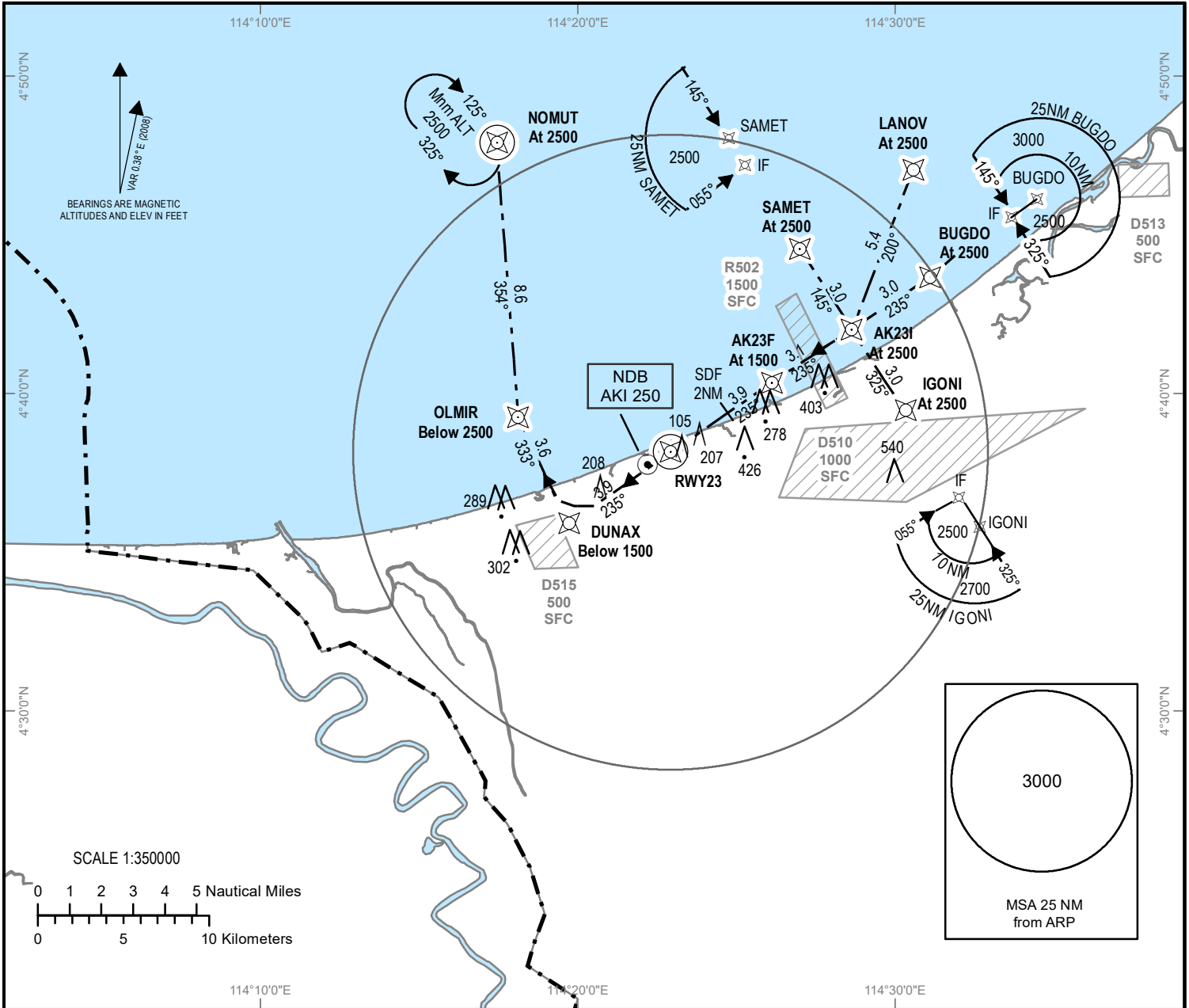
KALVI	050842.90N	1144223.66E
LANOT	045947.16N	1143521.91E
LANOV	044719.23N	1143034.62E

INSTRUMENT APPROACH CHART - ICAO

AERODROME ELEV 9ft
 HEIGHTS RELATED TO
 THR RWY 23 - ELEV 9ft
 MIN TEMP 20°C

TWR 122.10

ANDUKI
 RNAV (GNSS)
 (CAT H) RWY 23

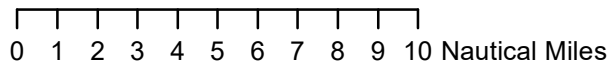
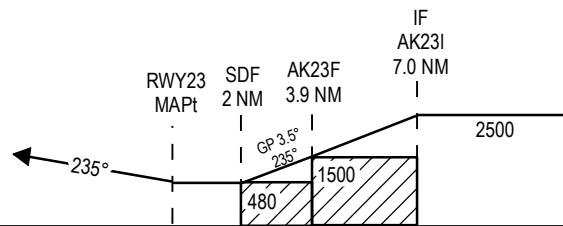


Transition Altitude: 11000ft

Note: Recommended profile of 3.5° (6.12%)

MISSED APPROACH (RWY 23) 4.2%
 Climb straight ahead to below 1500' at DUNAX then right below 2500' at OLMIR, then climbing to 2500' to NOMUT and hold.

RDH 50 FT



OCA(H)								
Category of Aircraft	H	NM TO THR						
		7	6	5	4	3	2	1
LNAV/VNAV	328(319)	7	6	5	4	3	2	1
LNAV	460(451)	2660 (2651)	2290 (2281)	1920 (1911)	1550 (1541)	1170 (1161)	800 (791)	430 (421)